

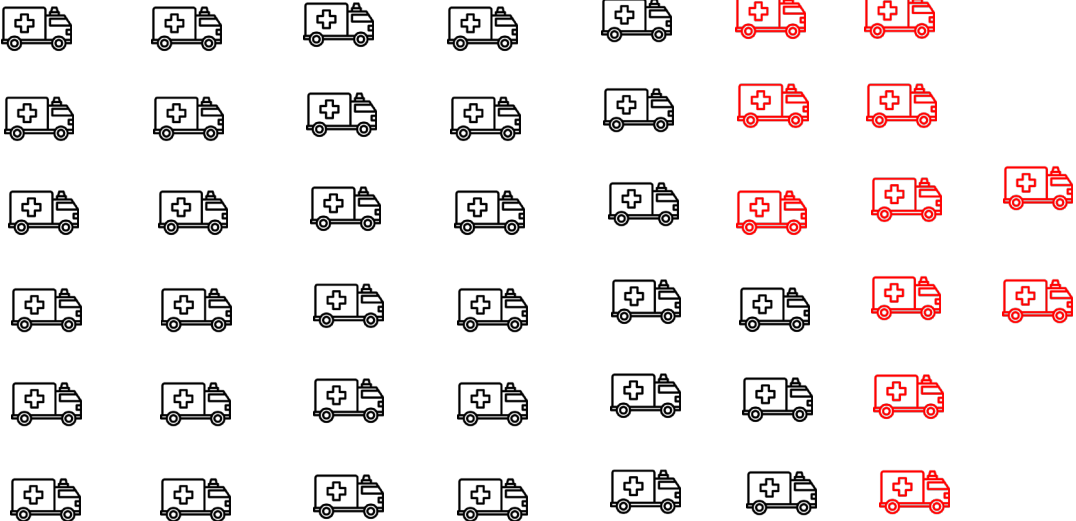
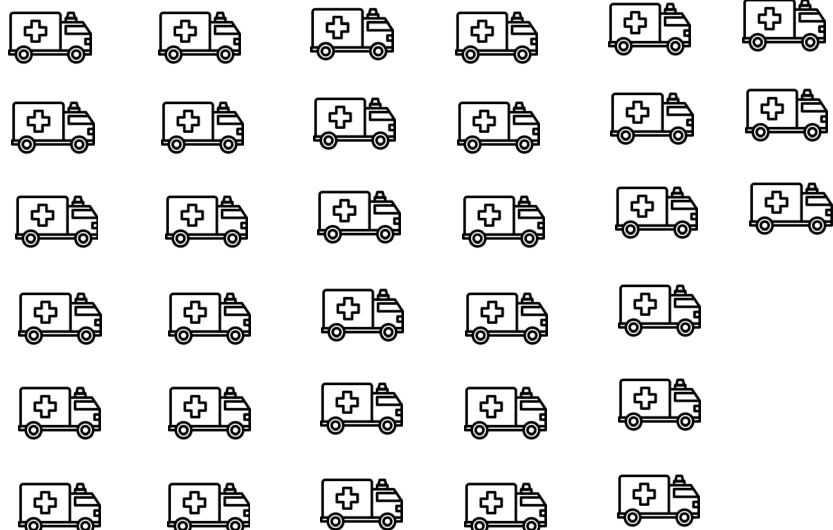
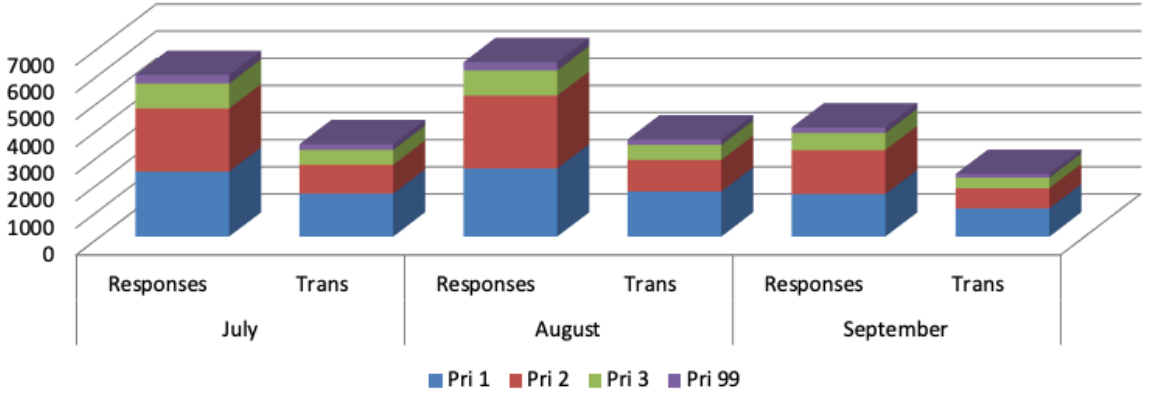
# A STATUS UPDATE: HEALTHCARE UTILIZATION IN WASHOE COUNTY

presented by Dean Dow, President and CEO, REMSA Health  
September 23, 2021

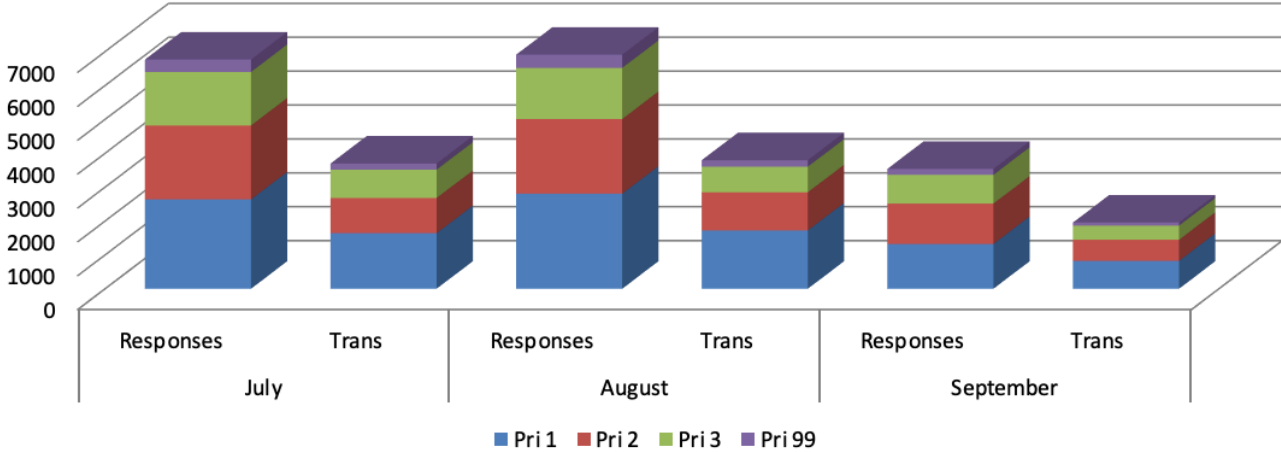


# RESPONSE AND TRANSPORT COMPARISON

2019



2021



## Weekend Snapshot: Operations

	Responses	Transports
09-17-21	230	121
09-18-21	188	100
09-19-21	219	112
<b>Grand Total</b>	<b>637</b>	<b>333</b>

# Weekend Snapshot: Clinical Statistics

- ▶ Nosebleed
- ▶ No medical complaint (6%)
- ▶ Cold / Cough
- ▶ Fever
- ▶ Sick Person (Body aches)
- ▶ Diarrhea

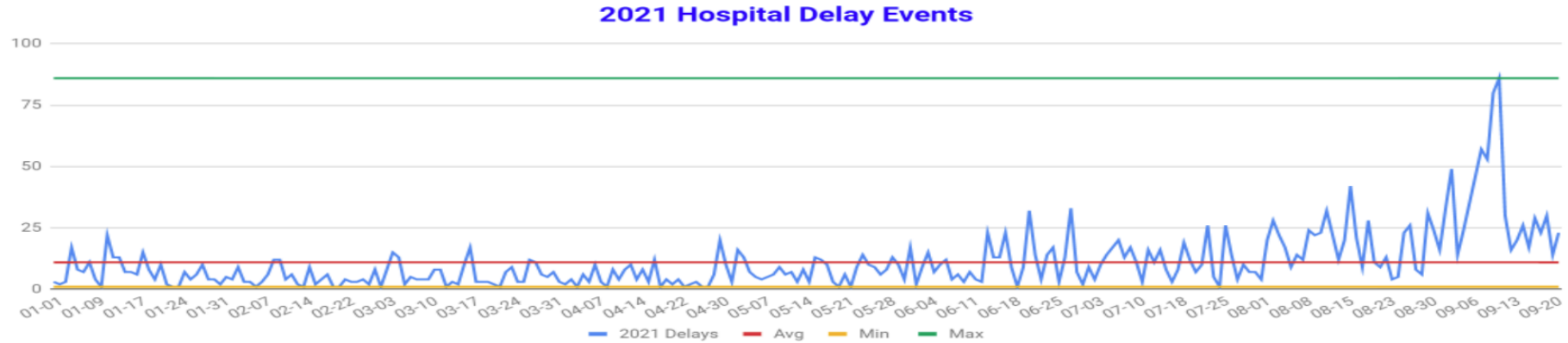
**23%** of calls from this weekend had no or low acuity

## Weekend Snapshot: Fiscal Impact (9/17 – 9/20)

(\$13,689)

- ▶ Transported 333 people
- ▶ For 8% of those transported, REMSA Health will not receive any reimbursement
- ▶ Average cost per transport of \$507

# Hospital Wall Time – Status 99s



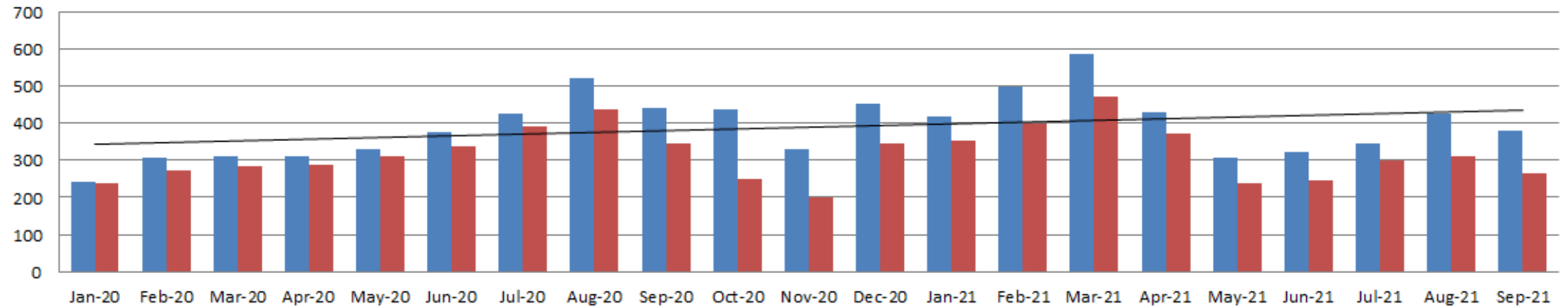
<b>System Totals</b>						<b>% Greater Than 30 Minutes</b>
	<b>&lt; 15 Minutes</b>	<b>16-30 Minutes</b>	<b>31-60 Minutes</b>	<b>&gt; 60 Minutes</b>	<b>Total</b>	
<b>January</b>	38	73	59	32	202	45.%
<b>February</b>	31	37	32	10	110	38.%
<b>March</b>	34	77	57	20	188	41.%
<b>April</b>	32	48	37	18	135	41.%
<b>May</b>	67	83	64	20	234	36.%
<b>June</b>	70	119	88	52	329	43.%
<b>July</b>	46	121	109	52	328	49.%
<b>August</b>	90	146	185	120	541	56.%
<b>September</b>	136	228	180	176	720	49.%
<b>October</b>	0	0	0	0	0	#DIV/0!
<b>November</b>	0	0	0	0	0	#DIV/0!
<b>December</b>	0	0	0	0	0	#DIV/0!
<b>Total</b>	544	932	811	500	2787	47.%

# CARES Campus Responses and Transports – July / Aug / September (9/15)

Month	Responses	Transports
July	255	189
August	276	215
September	161	119
Grand Total	692	523

# Status Report: ILS Responses

## ILS Program Responses and Transports

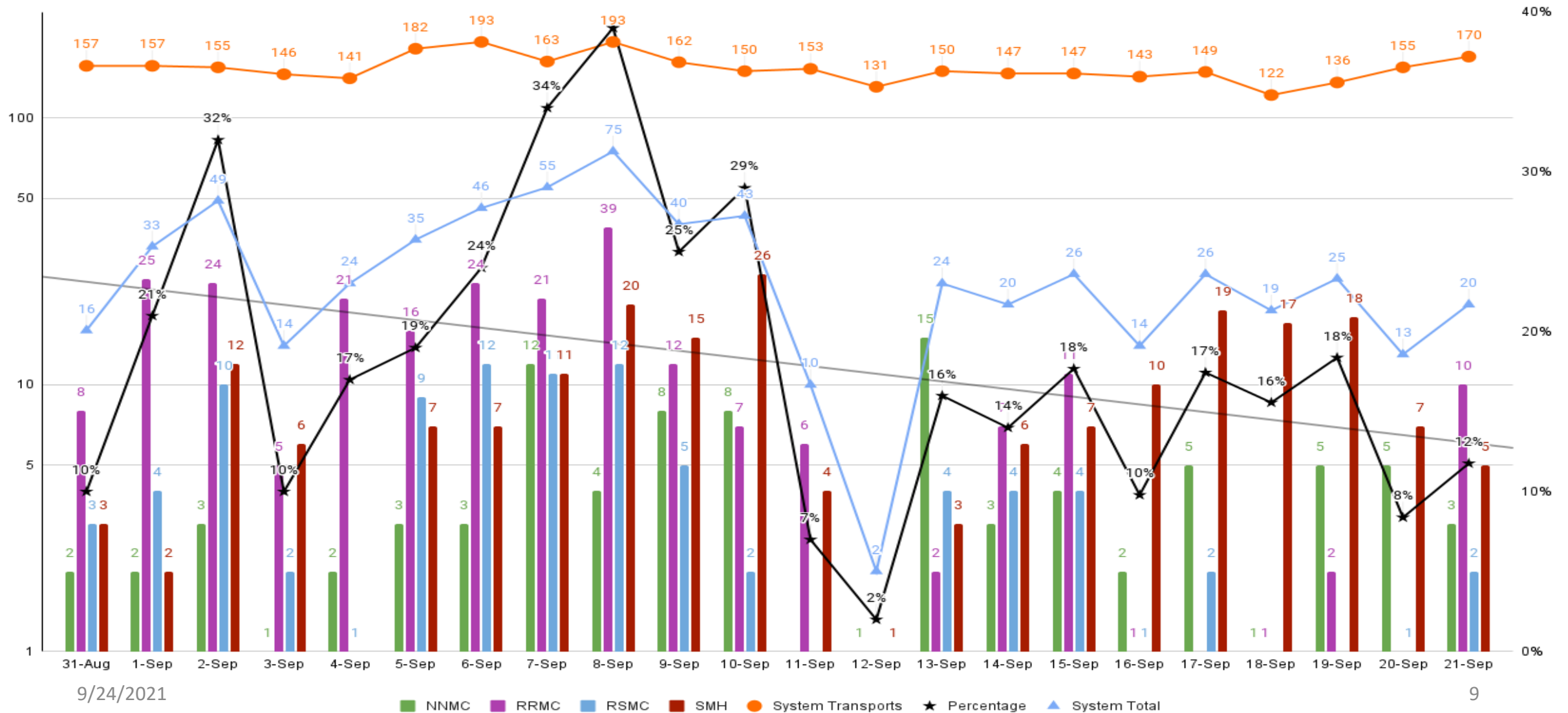


	Jan-20	Feb-20	Mar-20	Apr-20	May-20	Jun-20	Jul-20	Aug-20	Sep-20	Oct-20	Nov-20	Dec-20	Jan-21	Feb-21	Mar-21	Apr-21	May-21	Jun-21	Jul-21	Aug-21	Sep-21
■ Responses	240	305	311	309	331	374	424	520	442	435	329	453	418	497	586	429	306	322	346	425	379
■ Transports	238	274	285	288	310	339	389	437	345	251	199	344	351	400	473	372	238	246	300	311	265



# Current ER Department Status

## Regional Hospital Overload Delay



9/24/2021

# Snapshot: ER Department Utilization

Renown Regional, Renown South Meadows, Northern Nevada Medical Center, Saint Mary's, VA

		TOTAL PATIENTS ACROSS ALL ERs
September	14	797
	15	579
	16	630
	17	580
	18	571
	19	557
	20	unknown
	21	676

# REMSA Health Staffing Status

96	Number of ground operations providers hired since December 2020
49	Number of active paramedics
02	Community Health Paramedics
04	Senior Field Training Officers
07	Paramedics in Training
06	Temporarily Authorized Paramedics
02	Long term Military
01	Long term FMLA

## Current Staffing Needs

30 paramedics  
40 AEMTS



[www.remsahealth.com](http://www.remsahealth.com)

