

COVID-19 Epidemiology Surveillance Program
Monthly COVID-19 Report: May 2023
MMWR Week #18 – 22, April 30 – June 3, 2023

Division of Epidemiology & Public Health Preparedness (EPPH) 775-328-2447

Adam Vazquez, MPH, COVID-19 Epidemiologist AVazquez@washoecounty.gov

Lissa Callahan, COVID-19 Statistician LCallahan@washoecounty.gov

Weekly Summary*

| Metrics | MMWR Week 18 | MMWR Week 19 | MMWR Week 20 | MMWR Week 21 | MMWR Week 22 |
|-------------------------------------|-------------------------|-------------------------|-------------------------|-------------------------|-------------------------|
| Number of New Cases | 69 | 60 | 61 | 66 | 54 |
| New Cases per 100,000 Population | 14 | 12 | 12 | 13 | 11 |
| Number of New Breakthrough Cases | 11 | 10 | 11 | 12 | 15 |
| Hospitalizations** | 6 | 4 | 8 | 7 | 2 |
| Deaths** | 0 | 0 | 1 | 1 | 0 |

- Up to Date on Vaccination as of 6/6/2023: 80,816 persons

*For definition and specifics on metrics summarized, please refer to corresponding sections.

**Note: hospitalization and death totals for each week are subject to change as new reports are received on a daily basis and are often delayed, causing underreporting in more recent MMWR weeks.

Key message(s)

- The number of cases reported in Washoe County decreased from 31 new cases per 100,000 population in MMWR week 14 to 11 new cases per 100,000 population in MMWR week 22.
- Only 16.3% of Washoe County’s population is up to date on their vaccination.
- Due to the end of the public health emergency, the CDC is in a transition period with their vaccination data tracker, affecting the ability to obtain certain vaccine breakdowns. Updates to this CDC data tracker are scheduled to be reinstated on or after June 15, 2023.

COVID-19 Case Information

Figure 1. Rate of New Cases Reported by MMWR Week, Washoe County and Nevada, 2023

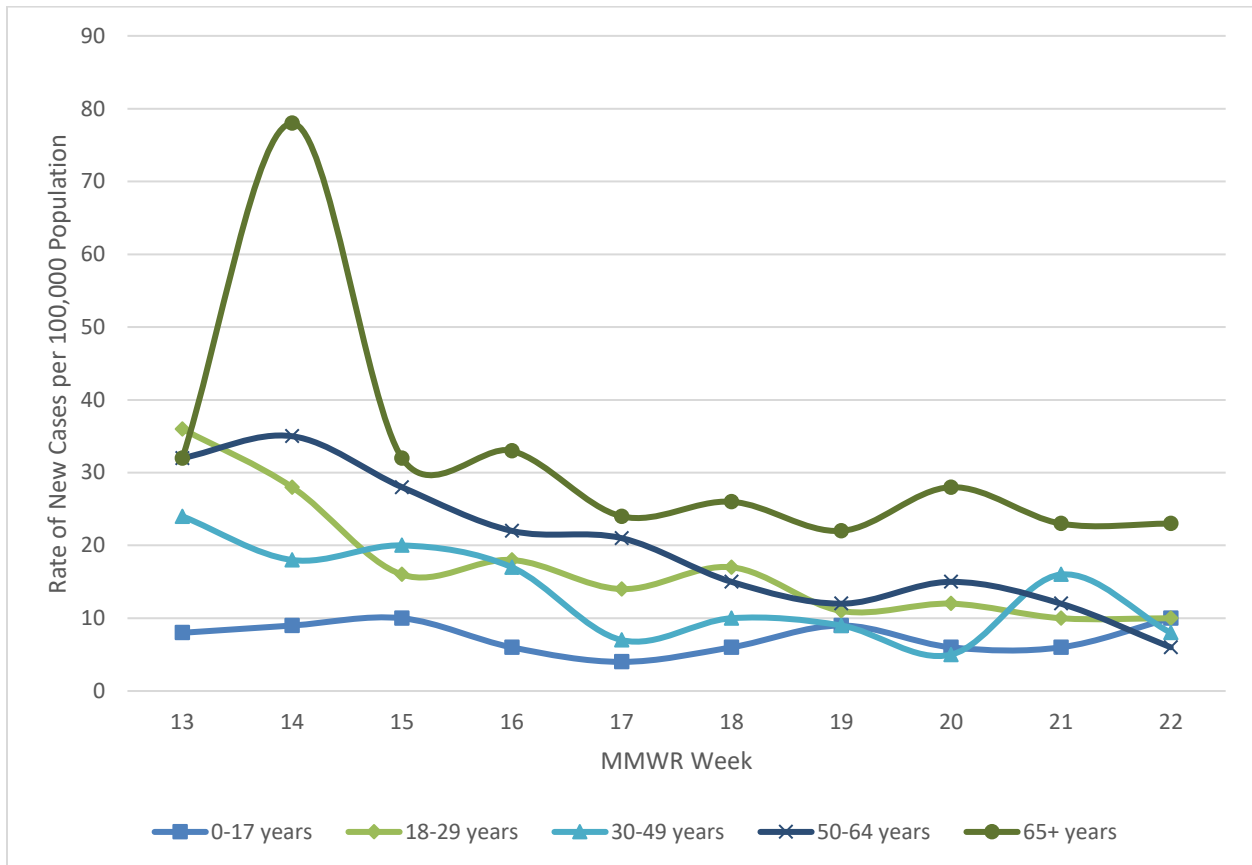


*Data source: Internal, WCHD

**Data Source: <https://nvhealthresponse.nv.gov/#covid-data-tracker>

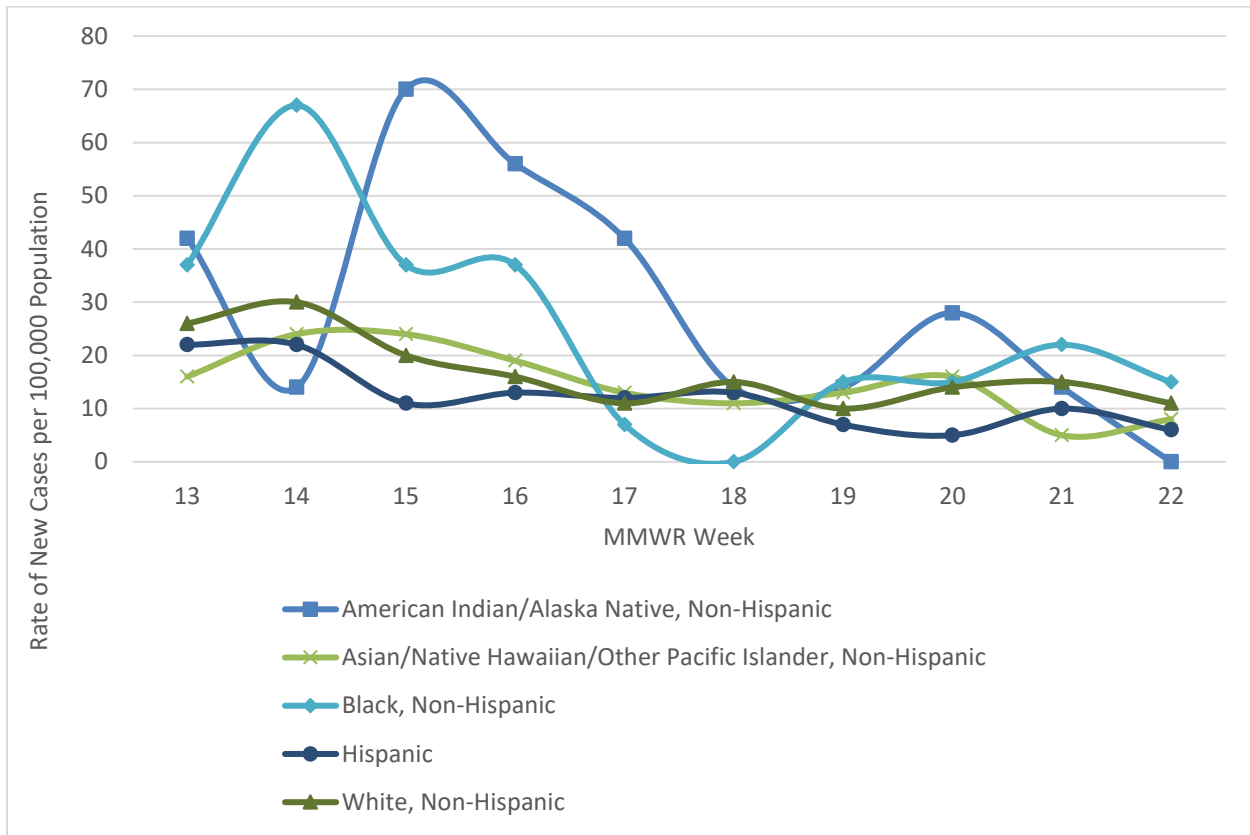
- In Washoe County, case counts decreased from a ten-week high of 31 new cases per 100,000 population in MMWR week 14 to 11 new cases per 100,000 population in MMWR week 22.
- In Nevada, case counts decreased to 9 new cases per 100,000 population in MMWR week 22 from a ten-week high of 26 new cases per 100,000 population in MMWR week 13.

Figure 2. Rate of New Cases Reported by Age Group and MMWR Week, Washoe County, 2023



- The 65+ age group consistently had the highest case rate from MMWR week 14 through MMWR week 22 with 23 new cases per 100,000 population in MMWR week 22. This was a decrease from a ten-week high of 78 new cases per 100,000 population in MMWR week 14 for this age group.
- The 0-17 and 30-49 age groups each had the lowest case rates in the MMWR weeks leading up to MMWR week 21.
- However, the age group with the lowest case rate during MMWR week 22 was the 50-64 age group with 6 new cases per 100,000 population. This was a decrease from 15 new cases per 100,000 population in MMWR week 20.

Figure 3. Rate of New Cases Reported by Race/Ethnicity* and MMWR Week, Washoe County, 2023



*Note: From MMWR week 13 to MMWR week 22, 7.3% of cases were recorded as “Declined to answer”, “Multiple”, “Other”, or “Unknown” and rates per 100,000 population are unable to be calculated for those categories.

- In MMWR week 22, those who identified as Black, Non-Hispanic had the highest rate of new cases at 15 new cases per 100,000 population, which is an increase from the lowest rate of new cases in MMWR week 18 at 0 new cases per 100,000 population.
- In MMWR week 22, those who identified as American Indian/Alaska Native, Non-Hispanic had the lowest rate of new cases per 100,000 population with 0 new cases per 100,000 population. This was a decrease from the highest rate of new cases at 28 new cases per 100,000 population in MMWR week 20.

Hospitalizations, ICU Status, & Deaths

COVID-19 hospitalizations are defined as those hospitalized for greater than or equal to 24 hours and have a positive SARS-CoV-2 laboratory test.

COVID-19 deaths are defined as decedents who have had a positive PCR COVID-19 lab report ≤ 30 days from death or post-mortem. This includes deaths attributed to COVID-19 related illnesses and, if not specifically listed on death certificate, a positive PCR COVID-19 lab, dependent on the manner of death. See full definition in Glossary/Key Terms at the end of the report.

Table 1. Number and Percent of New Cases Reported by Age and Hospitalization Status, MMWR Weeks* 18 through 22, Washoe County, 2023

| | | | Age Group | | | | |
|-----------|----|----------------|-----------|-------|-------|-------|-------|
| | | | 0-17 | 18-29 | 30-49 | 50-64 | 65+ |
| MMWR Week | 18 | Total Cases | 6 | 15 | 13 | 14 | 21 |
| | | % Hospitalized | 0.0% | 0.0% | 0.0% | 14.3% | 19.0% |
| | 19 | Total Cases | 10 | 10 | 11 | 11 | 18 |
| | | % Hospitalized | 10.0% | 0.0% | 0.0% | 0.0% | 16.7% |
| | 20 | Total Cases | 7 | 11 | 6 | 14 | 23 |
| | | % Hospitalized | 14.3% | 0.0% | 16.7% | 7.1% | 21.7% |
| | 21 | Total Cases | 7 | 9 | 20 | 11 | 19 |
| | | % Hospitalized | 42.9% | 0.0% | 5.0% | 0.0% | 15.8% |
| | 22 | Total Cases | 11 | 9 | 10 | 5 | 19 |
| | | % Hospitalized | 0.0% | 0.0% | 10.0% | 0.0% | 5.3% |

*Note: hospitalization totals for each week are subject to change as new reports are received on a daily basis and are often delayed, causing underreporting in more recent MMWR weeks.

- During MMWR weeks 18, 19, and 20 the age group with the highest percentage of total cases resulting in hospitalization were those 65+ years old at 19.0% of cases hospitalized in MMWR week 18, 16.7% of cases hospitalized in MMWR week 19, and 21.7% of cases hospitalized in MMWR week 20.
- During MMWR week 21, the age group with the highest percentage of total cases resulting in hospitalization were those 0-17 years old at 42.9% of cases hospitalized.
- During MMWR week 22, the age group with the highest percentage of total cases resulting in hospitalization were those 30-49 years old at 10.0% of cases hospitalized.

Table 2. Number and Percentage of Cases Reported by Hospitalization and ICU Status by MMWR Week*, Washoe County, 2023

| MMWR Week | New Cases | Hospitalized | | ICU | |
|-----------|-----------|--------------|------|-----|-----|
| | | # | % | # | % |
| 13 | 127 | 13 | 10.2 | 0 | 0.0 |
| 14 | 154 | 6 | 3.9 | 0 | 0.0 |
| 15 | 101 | 13 | 12.9 | 0 | 0.0 |
| 16 | 90 | 11 | 12.2 | 0 | 0.0 |
| 17 | 64 | 4 | 6.2 | 0 | 0.0 |
| 18 | 69 | 6 | 8.7 | 0 | 0.0 |
| 19 | 60 | 4 | 6.7 | 0 | 0.0 |
| 20 | 61 | 8 | 13.1 | 0 | 0.0 |
| 21 | 66 | 7 | 10.6 | 1 | 1.5 |
| 22 | 54 | 2 | 3.7 | 0 | 0.0 |

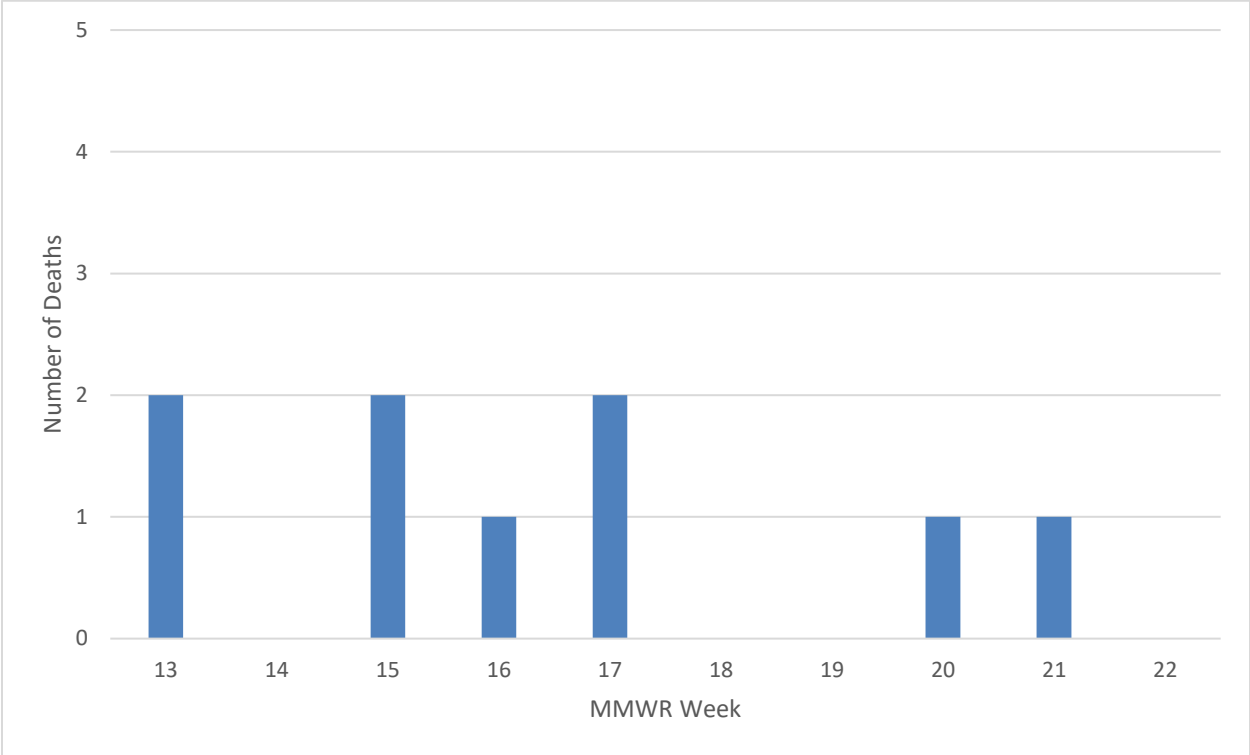
*Note: hospitalization and ICU totals for each week are subject to change as new reports are received on a daily basis and are often delayed, causing underreporting in more recent MMWR weeks.

Table 3. COVID-19 Deaths by Age Group and Time Period* of Death, Washoe County, 2020-2023

| Time Period | Total Deaths | 0-17 years | 18-29 years | 30-49 years | 50-64 years | 65+ years |
|-----------------------|--------------|------------|-------------|-------------|-------------|-----------|
| 2020 March - December | 510 | 1 | 2 | 31 | 85 | 391 |
| 2021 Total | 567 | 2 | 6 | 61 | 128 | 370 |
| 2022 Total | 264 | 0 | 2 | 14 | 37 | 211 |
| 2023 January | 5 | 0 | 0 | 0 | 1 | 4 |
| 2023 February | 6 | 0 | 0 | 0 | 0 | 6 |
| 2023 March | 7 | 0 | 0 | 0 | 0 | 7 |
| 2023 April | 5 | 0 | 0 | 0 | 0 | 5 |
| 2023 May | 2 | 0 | 0 | 0 | 0 | 2 |

*Note: death totals are subject to change as new reports are received on a daily basis and are often delayed, causing underreporting in more recent months.

Figure 4. Number of Deaths Occurring by MMWR Week*, Washoe County, 2023



*Note: death totals for each week are subject to change as new reports are received on a daily basis and are often delayed, causing underreporting in more recent MMWR weeks.

- At the time of publication, there have not been any deaths reported to have occurred during MMWR weeks 14, 18, 19, and 22.

Vaccinations

Current recommendations from the CDC now classify vaccination status as not up to date or up to date on vaccination. Please see the CDC's webpage for details on what qualifies as "up to date": <https://www.cdc.gov/coronavirus/2019-ncov/vaccines/stay-up-to-date.html>.

Currently, 80,816 (16.3% of population) Washoe County residents are up to date on their vaccination; data as of 6/6/2023.

Table 4. Percentage of Population Up to Date on Vaccination by Sex, Age Group, and Race/Ethnicity*, Washoe County, 2023

| Select Demographics | | % Population Up to Date on Vaccination |
|---------------------|--|--|
| Sex | Female | 17.4% |
| | Male | 15.3% |
| Age Group | 0-17 years | 4.4% |
| | 18-29 years | 6.2% |
| | 30-49 years | 12.1% |
| | 50-64 years | 24.0% |
| | 65+ years | 41.2% |
| Race / Ethnicity* | American Indian/Alaska Native, Non-Hispanic** | 11.3% |
| | Asian/Native Hawaiian/Other Pacific Islander, Non-Hispanic | 10.0% |
| | Black, Non-Hispanic | 7.0% |
| | Hispanic | 6.9% |
| | White, Non-Hispanic | 13.1% |

*Note: 32.6% of the total vaccinated population were recorded as "Unknown" or "Other" and therefore population percentages are unable to be calculated for those categories.

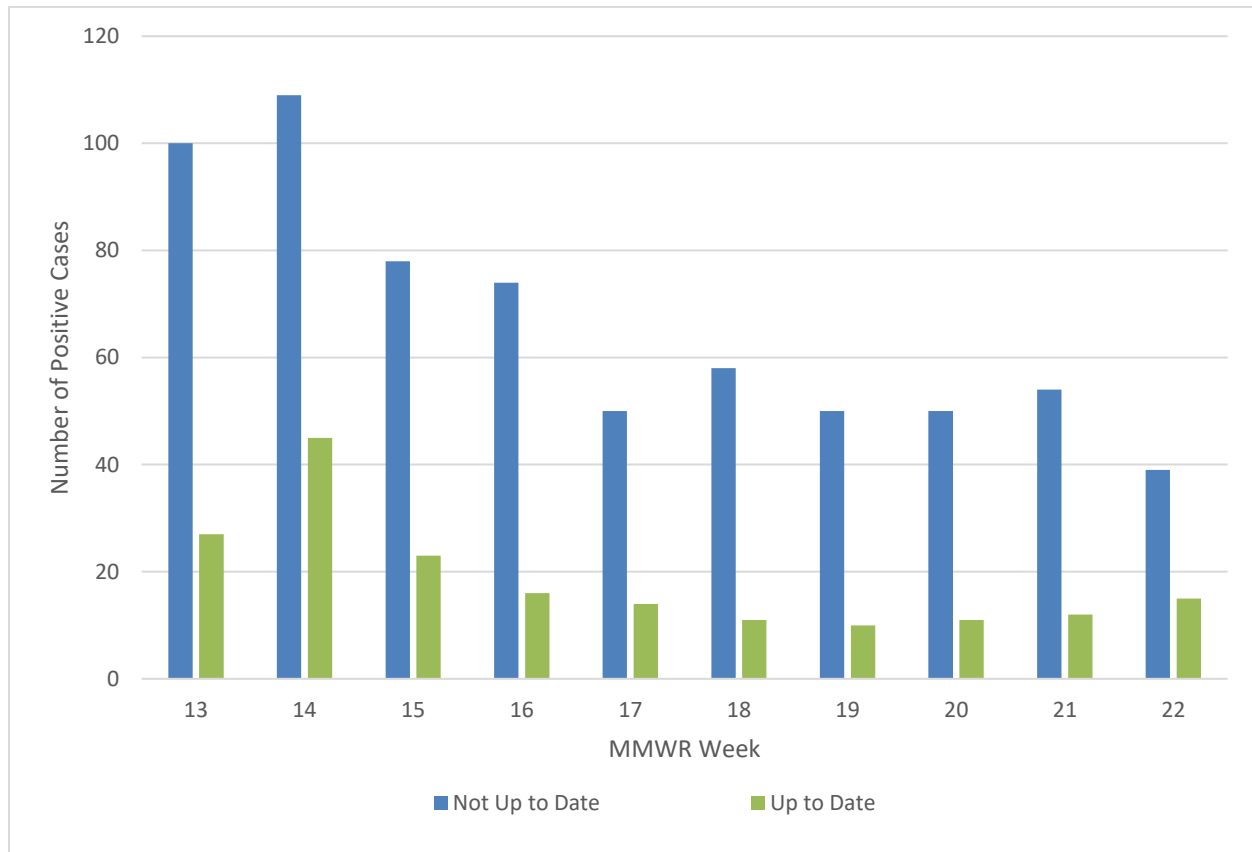
**Note: Tribal populations may be underrepresented as the data source does not include Indian Health Services (IHS) data, which may contain vaccination records for tribal members and those who access services through IHS clinics.

- In Washoe County, the age group with the highest percent population up to date on their COVID-19 vaccination are those 65+ years, with 41.2% of the population.
- Those who identify as White, Non-Hispanic have the highest percent population that is up to date on their COVID-19 vaccination with 13.1% of the population.

Breakthrough Cases

A breakthrough COVID-19 case is defined as a Washoe County resident who has SARS-CoV-2 PCR or antigen detected through laboratory testing while being up to date on their COVID-19 vaccination.

Figure 5. Number of Cases by Vaccination Status and MMWR Week*, Washoe County, 2023



*Note: vaccination data for each week are subject to change as vaccinations are updated regularly and are often on a delay internally, causing underreporting in more recent MMWR weeks.

- Cases who are Not Up to Date on their COVID-19 vaccination consistently make up a higher percentage of total cases than those who are Up to Date.
- Those who are Not Up to Date made up 84.1% of new cases in MMWR week 18 and decreased to 72.2% of new cases by MMWR week 22.
- Cases who were Up to Date on their vaccination made up 15.9% of new cases in MMWR week 18 and increased to 27.8% of new cases by MMWR week 22.

Table 5. Number and Percentage of Cases Reporting with Hospitalization and ICU by Vaccination Status and MMWR Week*, Washoe County, 2023

| All Cases | | | | Cases Without Up to Date Vaccination | | | | Breakthrough Cases | | | |
|-----------|-----------|--------------------|-----------|--------------------------------------|----------------|-----|----------------|--------------------|----------------|-----|----------------|
| MMWR Week | New Cases | Total Hospitalized | Total ICU | Hospitalized | | ICU | | Hospitalized | | ICU | |
| | | | | # | % ^a | # | % ^b | # | % ^a | # | % ^b |
| 13 | 127 | 13 | 0 | 7 | 53.8 | 0 | 0.0 | 6 | 46.2 | 0 | 0.0 |
| 14 | 154 | 6 | 0 | 4 | 66.7 | 0 | 0.0 | 2 | 33.3 | 0 | 0.0 |
| 15 | 101 | 13 | 0 | 11 | 84.6 | 0 | 0.0 | 2 | 15.4 | 0 | 0.0 |
| 16 | 90 | 11 | 0 | 9 | 81.8 | 0 | 0.0 | 2 | 18.2 | 0 | 0.0 |
| 17 | 64 | 4 | 0 | 3 | 75.0 | 0 | 0.0 | 1 | 25.0 | 0 | 0.0 |
| 18 | 69 | 6 | 0 | 4 | 66.7 | 0 | 0.0 | 2 | 33.3 | 0 | 0.0 |
| 19 | 60 | 4 | 0 | 4 | 100.0 | 0 | 0.0 | 0 | 0.0 | 0 | 0.0 |
| 20 | 61 | 8 | 0 | 6 | 75.0 | 0 | 0.0 | 2 | 25.0 | 0 | 0.0 |
| 21 | 66 | 7 | 1 | 7 | 100.0 | 1 | 100.0 | 0 | 0.0 | 0 | 0.0 |
| 22 | 54 | 2 | 0 | 2 | 100.0 | 0 | 0.0 | 0 | 0.0 | 0 | 0.0 |

*Note: hospitalization and ICU totals for each week are subject to change as new reports are received on a daily basis and are often delayed, causing underreporting in more recent MMWR weeks.

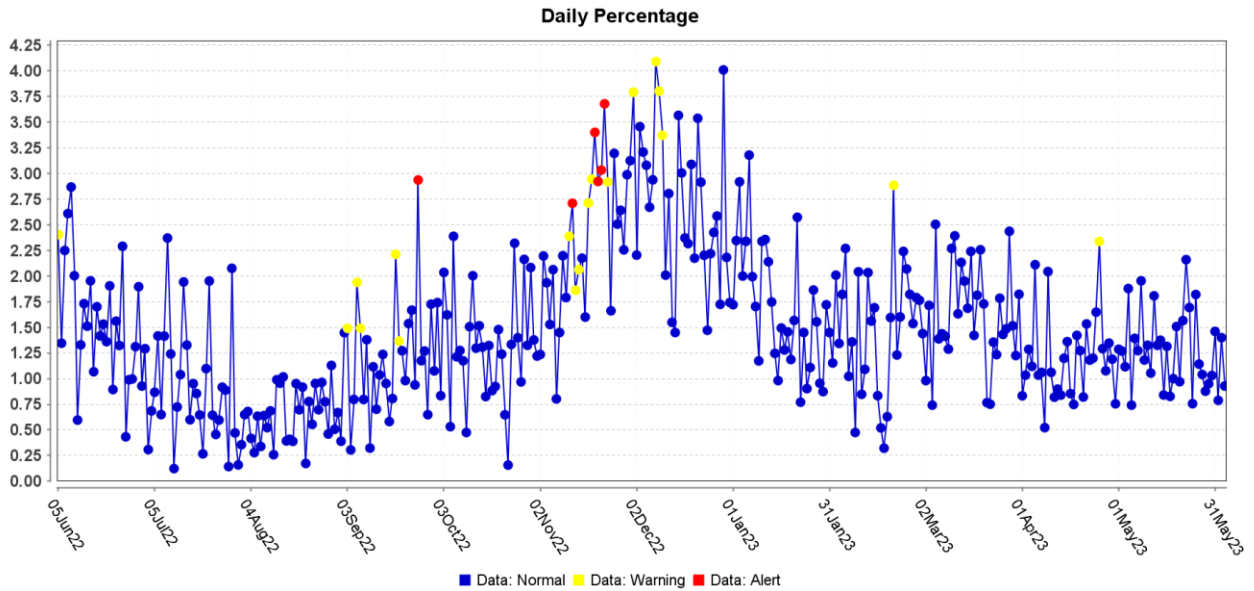
^a Calculated as the percentage of Total Hospitalizations by vaccination status for the MMWR week.

^b Calculated as the percentage of Total ICU by vaccination status for the MMWR week.

Surveillance Data

The percentage of persons indicating COVID-19 as the reason for visit to the Emergency Room (ER) is presented in Figure 6. The overlay below depicts COVID-19 in blue. Alerts appear as yellow and/or red dots. They indicate an unusually high percentage of COVID-19 visits according to ESSENCE algorithms.

Figure 6. Percentage of ER Visits Due to COVID in the Last Year, Washoe County



Data source: ESSENCE

Glossary/Key Terms

Data

Unless otherwise noted, data in this report are based on symptom onset date (when available or applicable), otherwise sample collection date is used. The Nevada State Demographer's data were used for population and demographics for Washoe County throughout this report.

COVID-19 Case

Coronavirus Disease 2019 (COVID-19) cases counted in this document are confirmed or probable cases as determined by meeting confirmatory laboratory evidence, clinical criteria, and/or epidemiologic linkage as defined on the CDC website here:

<https://ndc.services.cdc.gov/case-definitions/coronavirus-disease-2019-2021/>

COVID-19 Hospitalization

COVID-19 hospitalizations are counted as those hospitalized for greater than or equal to 24 hours and have a positive SARS-CoV-2 laboratory test.

As of October 2022, this includes any patient with a positive result on a SARS-CoV-2 laboratory test collected from 14 days before through three days after hospital admission.

- (<https://preparedness.cste.org/wp-content/uploads/2022/10/Interim-CSTE-Guidance-for-COVID-Hospitalization.pdf>)

COVID-19 Death

As of January 1, 2022, both Confirmed and Probable COVID-19-associated deaths are included in the count.

- (https://cdn.ymaws.com/www.cste.org/resource/resmgr/pdfs/pdfs2/20211222_interim-guidance.pdf)

Criteria for confirmed case death:

- The case meets the confirmed COVID-19 surveillance case definition, AND at least ONE of the following criteria is met:
 - A case investigation determined that COVID-19 was the cause of death or contributed to the death.
 - The death certificate indicates COVID-19 or an equivalent term as one of the causes of death, regardless of the time elapsed since specimen collection of the confirmatory laboratory test used to define the case.
 - The death occurred within (and including) 30 days of specimen collection for the confirmatory laboratory test used to define the case and was due to natural causes (e.g., the Manner of Death is coded as "natural" on the death certificate.)

Criteria for probable case death:

- The case meets the probable COVID-19 case definition AND a case investigation determined that COVID-19 was the cause of death or contributed to the death; **OR**

- The case meets the probable COVID-19 surveillance case definition based on presumptive laboratory evidence AND death occurred within (and including) 30 days of specimen collection and was due to natural causes (e.g., the Manner of Death is coded as “natural” on the death certificate.); **OR**
- The case meets the probable COVID-19 surveillance case definition based on epidemiologic linkage and meeting clinical criteria, AND death occurred within (and including) 30 days of symptom onset and was due to natural causes (e.g., the Manner of Death is coded as “natural” on the death certificate.); **OR**
- The case meets the probable COVID-19 surveillance case definition based only on vital records criteria (i.e., a death certificate that lists COVID-19 disease or SARS-CoV-2 or an equivalent term as an underlying cause of death or a significant condition contributing to death and there is no confirmatory or presumptive laboratory evidence.)

Links

WCHD COVID Dashboard

<https://washoe.maps.arcgis.com/apps/dashboards/0db36fa8fa9c47758bc38210e4c23818>

WCHD website for COVID information and vaccine appointments

<https://covid19washoe.com/>

CDC COVID Data Tracker <https://covid.cdc.gov/covid-data-tracker/>

Nevada State Public Health Laboratory created a new COVID-19 variant web page

<https://www.nvsarscov2variant.com/variants>

Department of Health and Human Services Nevada Division of Public and Behavioral Health (DPBH) Technical Bulletins

https://dpbh.nv.gov/Resources/Technical_Bulletins-New/

WCHD COVID reports <https://covid19washoe.com/daily-updates/washoe-county-covid-19-data-report/>

CD Annual Report for 2021

https://www.washoecounty.gov/health/files/ephp/communicable-diseases/annual-summary/Publication_Final.pdf