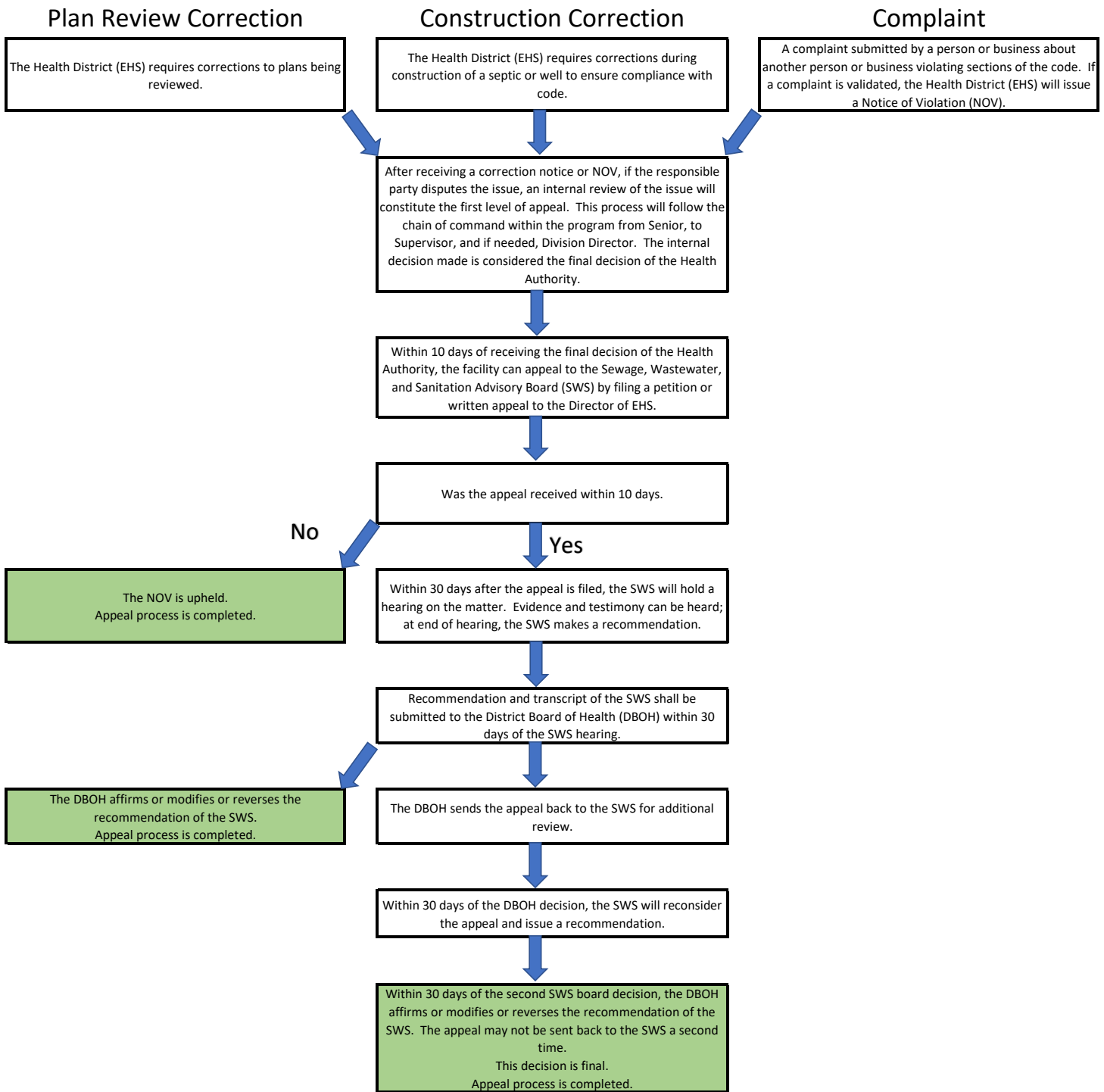


Washoe County Health District Land Development Appeal Process



*Appeals apply to disputes interpretations or applications of specific codes. They are not to be confused with variances, which are required when codes cannot be met. While an appeal can lead to a variance, these are two distinct processes. Regulatory reference for appeal and variance processes can be found in The Washoe County Health District Regulations Governing Sewage, Wastewater, and Sanitation, Section 170.