

NORTHERN NEVADA
Public Health 2024-2025 Respiratory Virus Surveillance
CDC Week #01 Dec. 29, 2024 - Jan. 4, 2025

Division of Epidemiology & Public Health Preparedness, 775-328-2447, epicenter@nnph.org
Danika Williams, MPH, Epidemiologist, Respiratory Virus Surveillance Coordinator
Lissa Callahan, Statistician

Weekly Summary & Changes from Previous Week *

- Influenza-like-illness (ILI) Activity: 5.6% (**decrease from 6.5%**)
- Influenza Hospitalizations: 8.6 per 100,000 population (**decrease from 11.1**)
- Influenza Deaths: 5 reported from MMWR week 40 to current date
- COVID Cases: 12.4 per 100,000 (**decrease from 15.2**)
- COVID Deaths: 10 reported from MMWR week 40 to current date
- Respiratory Syncytial Virus (RSV): 43.0 per 100,000 (**increase from 25.9**)
- Syndromic Surveillance:
 - No aberrations detected.
 - **Increases** in ED and UC Visits were detected for influenza and RSV. No aberrations were detected for COVID-19.

*For definition and specifics on metrics summarized, please refer to corresponding sections.

Key Message(s)

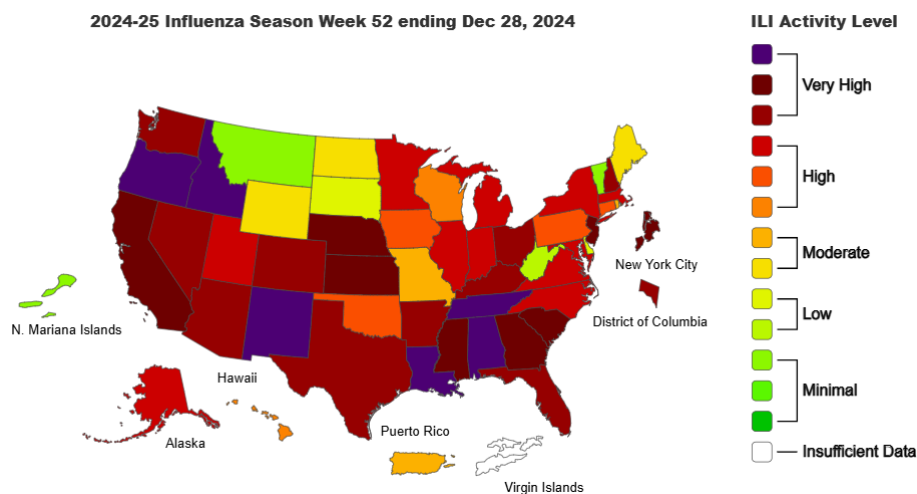
- Due to federal offices being closed on January 9, Week 01 federal data was not available. Week 52 data is presented as the most current data in parts of this report.
- Influenza and RSV activity are high. RSV is increasing. COVID-19 activity remains low.
- Washoe County ILI exceeded the Nevada and Region 9 baselines. The Nevada, Region 9 and US ILI have all been above their respective baselines.
- Influenza and COVID-19 hospitalization rates were highest in the ≥ 65 -year age group.
- The most frequently identified influenza virus type reported by the Nevada State Public Health Laboratory was influenza A.
- Weekly RSV case rates are highest in the 0-4 years age group.
- There are prescription flu antiviral drugs that can treat flu illness; those should be started as early as possible and are especially important for higher risk patients.
- Routine annual influenza vaccination is still recommended for all persons aged 6 months or older, as long as there are no contraindications

Influenza-like-illness (ILI)

Influenza-like-illness (ILI) is defined as fever ($\geq 100^{\circ}\text{F}$ [37.8°C]) and cough and/or sore throat. ILI data is submitted weekly by inpatient and outpatient health services who have completed the onboarding process to be a sentinel surveillance provider. ILI activity levels use the proportion of outpatient visits to healthcare providers for respiratory illness, not laboratory confirmed influenza. ILI activity may capture patient visits due to other respiratory pathogens that cause similar symptoms to influenza.

- Out of 14 sentinel providers, 14 reported data for this CDC week.
- Washoe County percentage of patients presenting with ILI reported by sentinel providers for the current week was 5.6% (**decrease from 6.5%**).
- The highest proportion of patients presenting with ILI was among the 0-4-year age group at 15.6% (**no change in age group, decrease from 17.7%**).
- The lowest proportion of patients presenting with ILI was among the ≥ 65 -year age group at 2.9% (**no change in age group, increase from 2.7%**).
- *Due to federal offices being closed on January 9, Week 01 federal data was not available. Week 52 data is presented as the most current data and is as follows:*
 - U.S. percentage of patients presenting with ILI was 6.8%, which was **ABOVE** the national baseline of 3.0%.
 - Region 9 percentage of patients presenting with ILI was 8.8%, which was **ABOVE** the regional baseline of 3.8%.
 - Nevada percentage of patients presenting with ILI was 7.3%, which was **ABOVE** the state baseline of 2.8%.

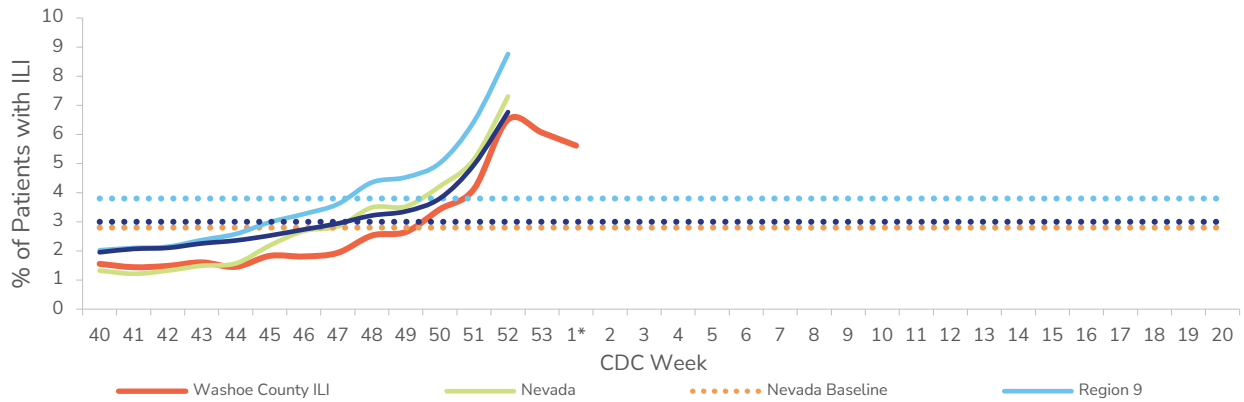
Figure 1. Outpatient Respiratory Illness Activity Map by State for Week 52*, United States, 2024-2025 Season



Data Source <https://www.cdc.gov/fluview/surveillance/>

*Due to federal offices being closed on January 9, Week 01 federal data was not available. Week 52 data is presented.

Figure 2. Comparison of ILI Activity at the Local, State, Regional, and National Level, Washoe County, 2024-2025 Season†

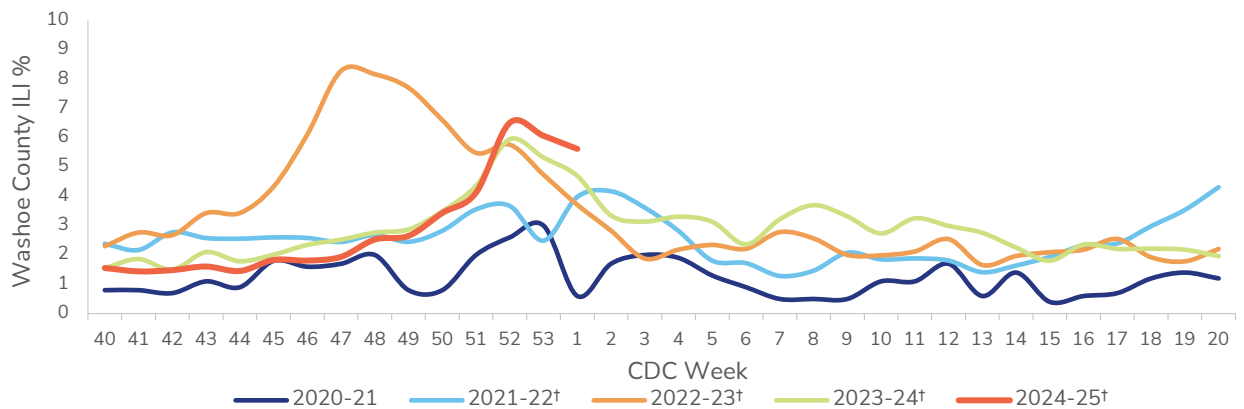


Data source for U.S., Region 9, and Nevada ILI activity and baselines: <https://gis.cdc.gov/grasp/fluview/fluportaldashboard.html>
 Region 9 & U.S. data are weighted, Nevada is unweighted. CDC methods: <https://www.cdc.gov/fluview/overview/index.html>

† Does not have a week 53, so the week 53 value is an average of week 52 and week 1.

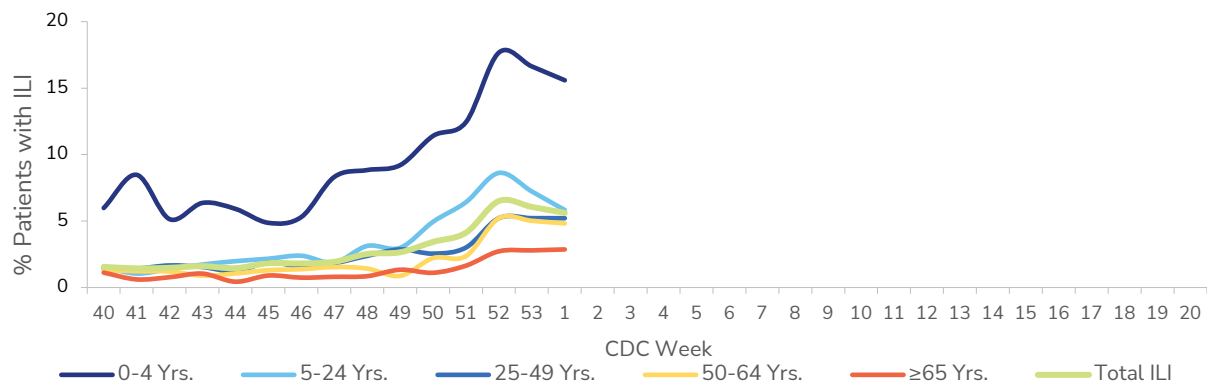
*Due to federal offices being closed on January 9, Week 01 federal data was not available.

Figure 3. ILI Activity Reported by Sentinel Providers, Washoe County, 2020-2024 Season†



† Does not have a week 53, so the week 53 value is an average of week 52 and week 1.

Figure 4. ILI Activity Reported by Sentinel Providers by Age Group, Washoe County, 2024-2025 Season†



† Does not have a week 53, so the week 53 value is an average of week 52 and week 1.

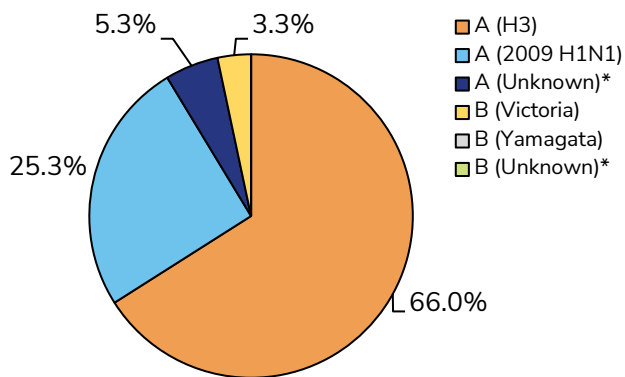
Nevada State Public Health Laboratory (NSPHL) Influenza Test Results

The NSPHL performs influenza subtyping of specimens submitted for surveillance purposes. Specimens are primarily submitted to the NSPHL by sentinel provider sites; however, all typed specimens are included in surveillance, even those not submitted by sentinel providers.

- The highest proportion of NSPHL specimens were A (Unknown)* at 100.0% (n=1) of specimens. No NSPHL specimen results were reported in the prior week (Week 52) for comparison.
- The highest proportion of NSPHL specimens to date have been A (H3) at 66.0% of specimens, followed by A (2009 H1N1) at 25.3%.

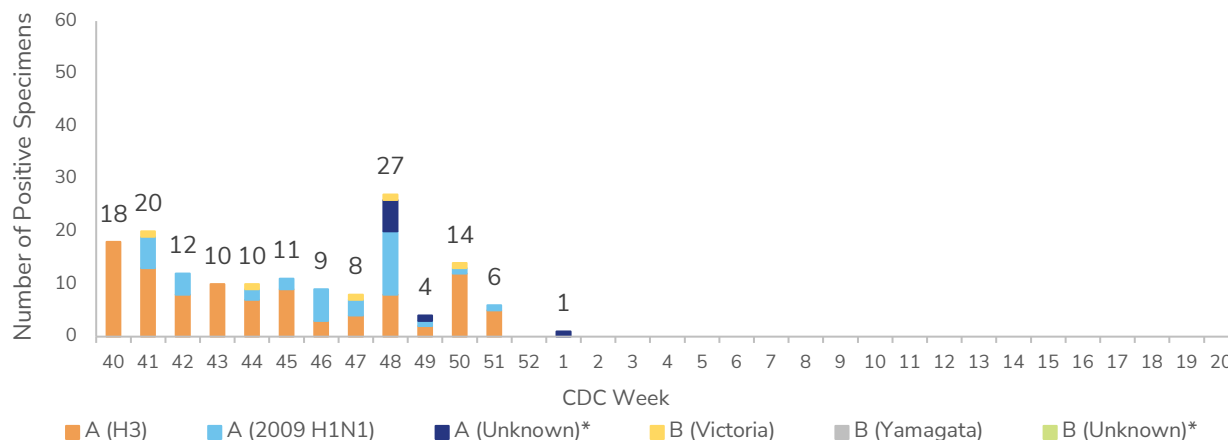
Table 1 & Figure 5. Specimens Submitted to NSPHL for Subtyping to Date, Washoe County, 2024-2025 Season

Influenza Subtype	# of Specimens	% of Total Specimens
A (H3)	99	66.0%
A (2009 H1N1)	38	25.3%
A (Unknown)*	8	5.3%
B (Victoria)	5	3.3%
B (Yamagata)	0	0.0%
B (Unknown)*	0	0.0%
Total	150	100%



*Unknown includes both rapid and unsubtyped PCR results.

Figure 6. Positive Specimens Submitted to NSPHL, Subtyping to Date by Week, Washoe County, 2024-2025 Season



*Unknown includes both rapid and unsubtyped PCR results.

Influenza Hospitalizations

Medical records are reviewed for cases with evidence of a positive influenza test who were hospitalized for greater than or equal to 24 hours. Information on the number of hospitalized cases, the number of hospitalized cases vaccinated, number of intensive care unit (ICU) admissions, and number of deaths among hospitalized cases are reported. Rates are per 100,000 population.

- The highest proportion of specimens among hospitalized cases was A (Unknown) at 86.4% of specimens **(no change in type)**.
- The highest proportion of specimens among hospitalized cases to date has been A (Unknown) at 91.0% of specimens **(no change in type)**.
- The influenza weekly hospitalization rate per 100,000 population in Washoe County was 8.6 **(decrease from 11.1)**.
- The influenza cumulative hospitalization rate per 100,000 population in Washoe County was 38.7 **(increase from 30.1)**.
- The age group with the highest weekly influenza hospitalization rate per 100,000 population in Washoe County was the ≥65-year age group at 27.5 **(no change in age group or rate)**.
- The age group with the highest cumulative influenza hospitalization rate per 100,000 population in Washoe County was the ≥65-year age group at 103.0 **(no change in age group, increase from 75.5)**.

Table 2. Number of Hospitalized Cases with Lab-Confirmed Influenza by Vaccination, ICU, and Death Status, Washoe County, 2024-2025 Season

	Current Week (Week 01)								Cumulative for 2024-2025 Influenza Season							
	December 29, 2024 - January 4, 2025								September 29, 2024 - January 4, 2025							
	Hosp.		Vax [§]		ICU		Death		Hosp.		Vax [§]		ICU		Death	
	#	%	#	%	#	%	#	%	#	%	#	%	#	%	#	%
Total # of cases reported	44	N/A	9	20	7	16	0	0	199	N/A	33	17	26	13	4	2
Influenza A (H3)	4	9	1	11	1	14	0	0	9	5	1	3	1	4	0	0
Influenza A (2009 H1N1)	2	5	0	0	1	14	0	0	7	4	0	0	1	4	0	0
Influenza A (Unknown)*	38	86	8	89	5	71	0	0	181	91	32	97	24	92	4	100
Influenza B (Victoria)	0	0	0	0	0	0	0	0	0	0	0	0	0	0	0	0
Influenza B (Yamagata)	0	0	0	0	0	0	0	0	0	0	0	0	0	0	0	0
Influenza B (Unknown)*	0	0	0	0	0	0	0	0	2	1	0	0	0	0	0	0
Influenza Unknown Type	0	0	0	0	0	0	0	0	0	0	0	0	0	0	0	0

*Unknown includes both rapid and unsubtyped PCR results.

§Vaccination status determined among hospitalized cases only. Patient is considered vaccinated if they received a flu vaccine ≥ 2 weeks prior to illness onset.

Figure 7. Influenza Positive Tests Among Hospitalized Cases by Week Reported, Washoe County, 2024-2025 Season

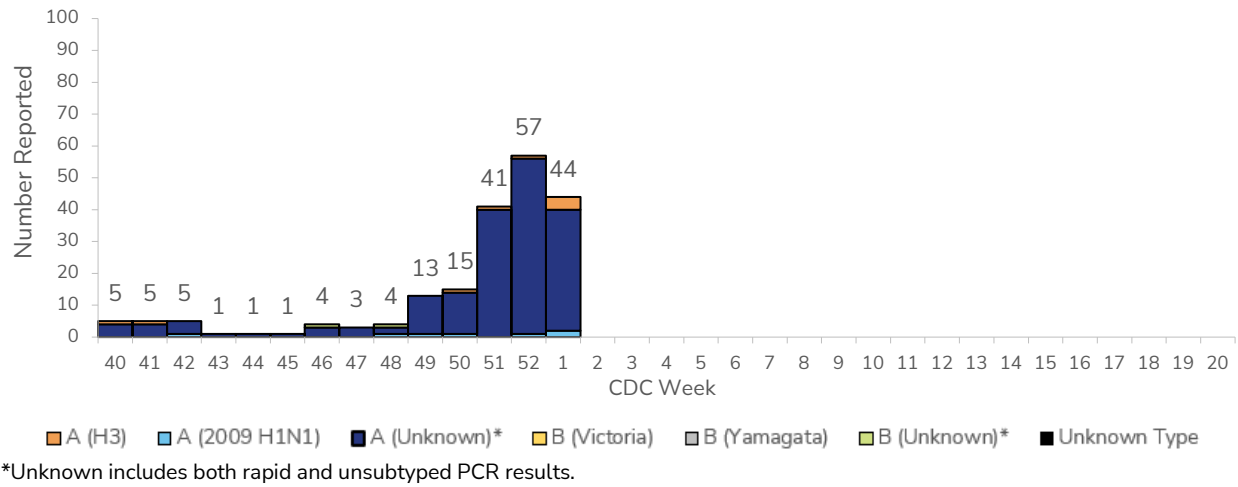
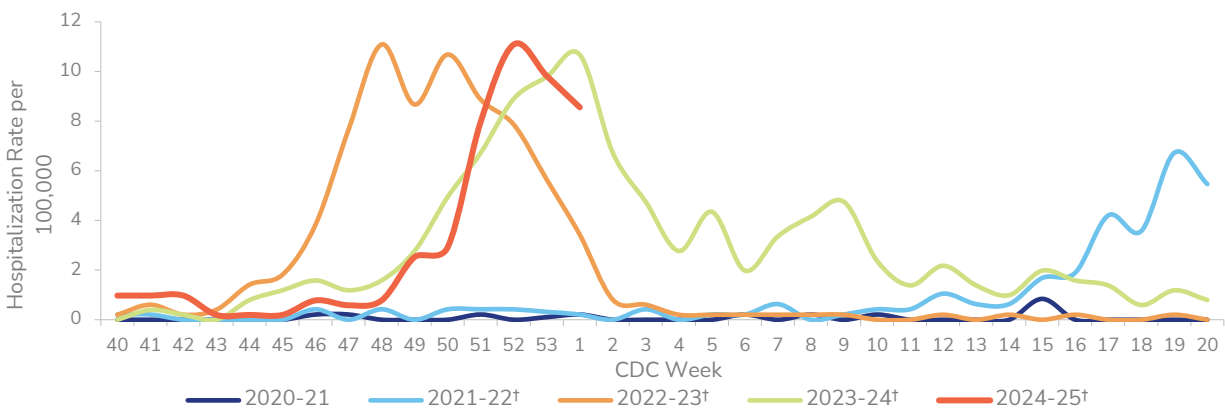
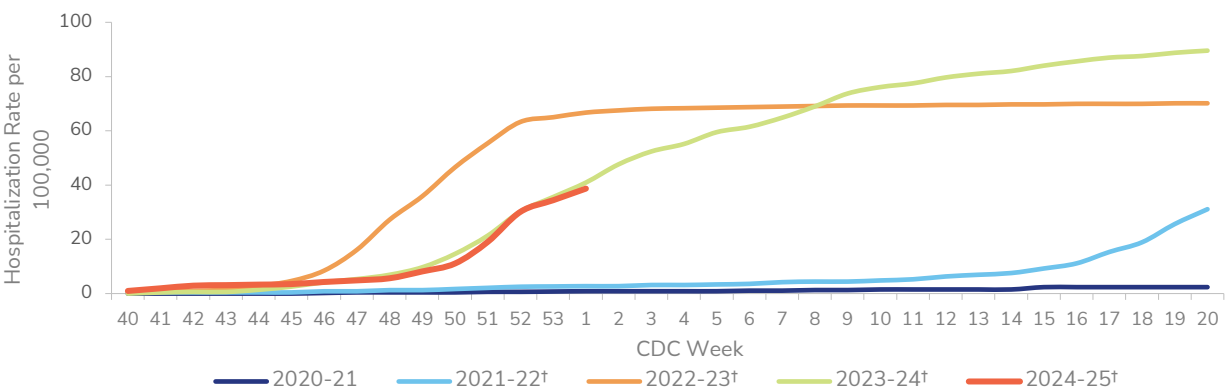


Figure 8. Influenza Weekly Hospitalization Rate per 100,000 Population, Washoe County, 2020-2024 Seasons†



† Does not have a week 53, so the week 53 value is an average of week 52 and week 1.

Figure 9. Influenza Cumulative Hospitalization Rate per 100,000 Population, Washoe County, 2020-2024 Seasons†



† Does not have a week 53, so the week 53 value is an average of week 52 and week 1.

Figure 10. Influenza Weekly Hospitalization Rate per 100,000 Population by Age Group, Washoe County, 2024-2025 Season

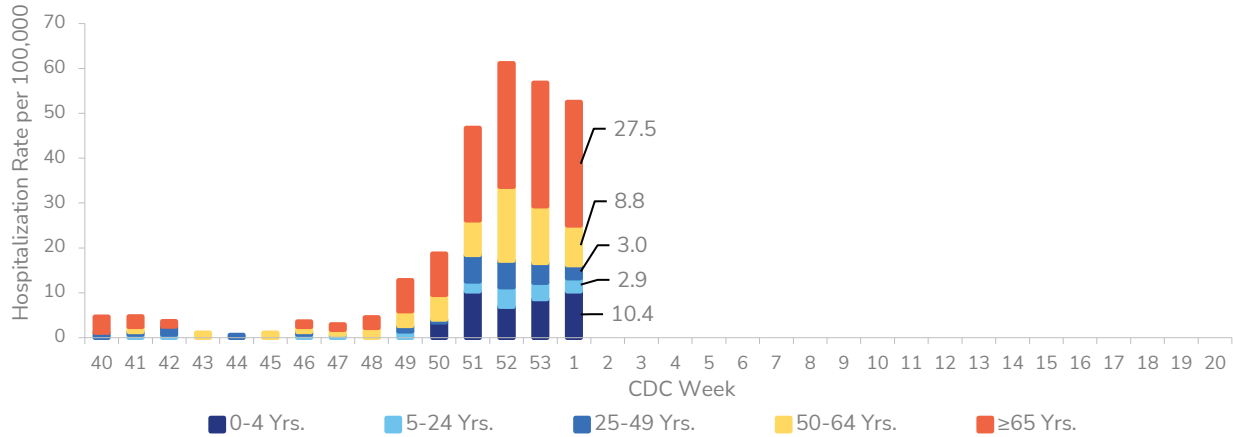
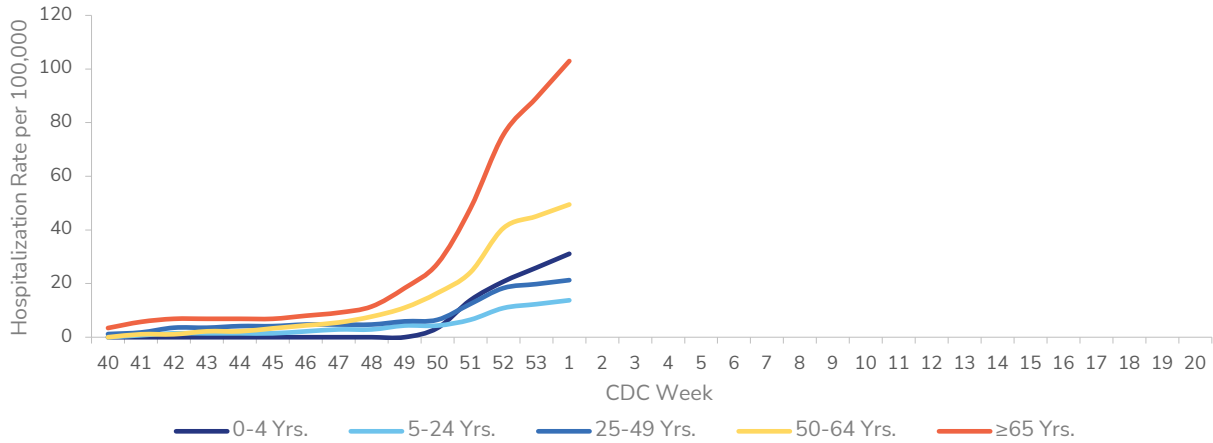


Figure 11. Influenza Cumulative Hospitalization Rate per 100,000 Population by Age Group, Washoe County, 2024-2025 Season



Influenza Deaths

For surveillance purposes, an influenza-associated death is defined as a death resulting from a clinically compatible illness that was confirmed to be influenza by an appropriate laboratory or rapid diagnostic test with no period of complete recovery between the illness and death. Only pediatric deaths are considered reportable. Hospitalization is not required to be considered an influenza-associated death; therefore, counts presented here may be higher than those presented among hospitalized cases.

- To date, 5 influenza-associated deaths have been reported.

Table 3. Cumulative Number of Influenza-Associated Deaths by Age Group & Hospitalization Status, Washoe County, 2024-2025 Season

Age Group	Deaths (Hospitalized)	Deaths (All)
0-4 Yrs.	0	0
5-24 Yrs.	0	0
25-49 Yrs.	0	0
50-64 Yrs.	1	2
≥65 Yrs.	3	3
Total	4	5

COVID-19 Cases, Hospitalizations, & Deaths

COVID-19 is the disease caused by severe acute respiratory syndrome coronavirus 2 (SARS-CoV-2) virus. Symptoms of COVID-19 include fever, chills, rigors, myalgia, headache, sore throat, nausea or vomiting, diarrhea, fatigue, congestion or runny nose, cough, shortness of breath, difficulty breathing, olfactory and taste disorder, confusion or change in mental status, persistent pain or pressure in the chest, pale, gray, or blue colored skin, lips, or nail beds, and inability to wake or stay awake. Severe respiratory illness may also present with pneumonia or acute respiratory distress syndrome.

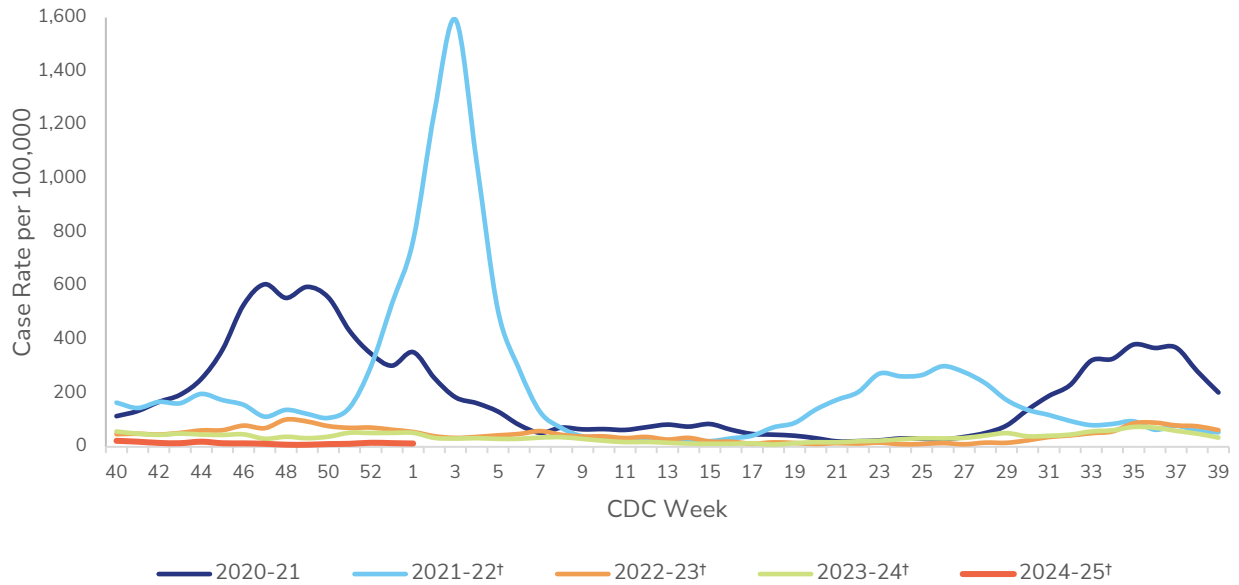
Only laboratory conducted tests are reported to NNPH, no at-home tests are counted in these data. Medical records are reviewed for cases with evidence of a positive SARS-CoV-2 test within 14 days prior to hospitalization who were hospitalized for greater than or equal to 24 hours. Deaths due to COVID-19 are those for which the investigation confirmed SARS-CoV-2 infection and determined that COVID-19 was the cause of death or contributed to the cause of death, AND/OR the death certificate lists a specific COVID-19 ICD-10 code.

- 64 cases of COVID-19 were reported for the current week (**decrease from 78**).
- The rate of COVID-19 was 12.4 cases per 100,000 (**decrease from 15.2**).
- The age group with the highest weekly COVID-19 rate per 100,000 population in Washoe County was the 0-4-year age group at 24.2 (**change in age group from ≥65**).

Table 4. Number and Rate per 100,000 of COVID-19 Cases by Current Week, Washoe County, 2024-2025 Season

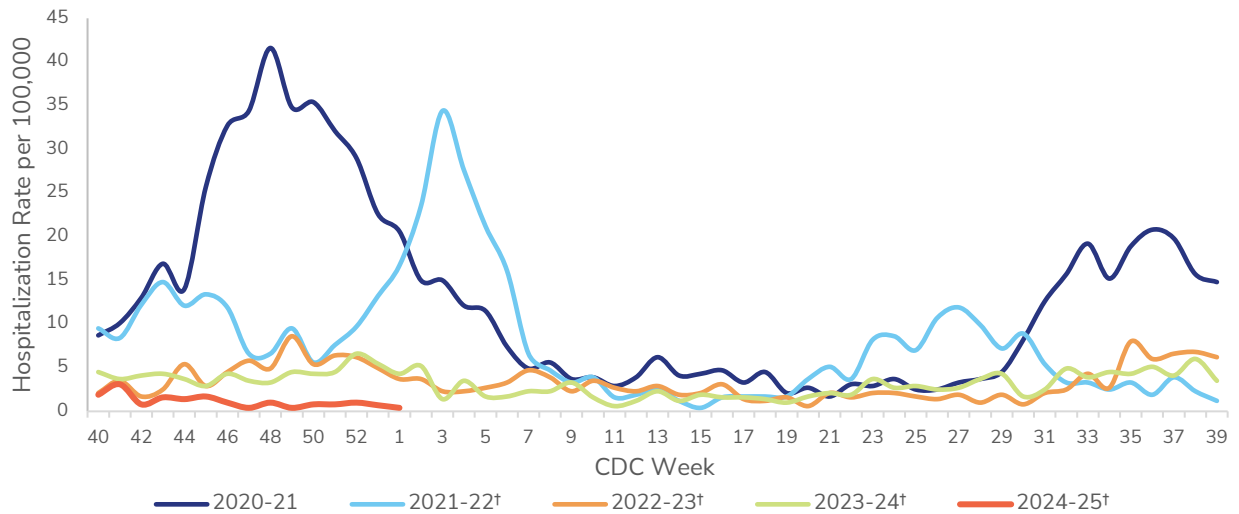
	Current Week (Week 01) December 29, 2024 - January 4, 2025	
Age Group	Count	Rate per 100,000
0-4 Yrs.	7	24.2
5-24 Yrs.	9	6.5
25-49 Yrs.	19	11.2
50-64 Yrs.	9	9.9
≥65 Yrs.	20	22.9
Total	64	12.4

Figure 12. COVID-19 Weekly Case Rate per 100,000 Population, Washoe County, 2020-2024 Seasons†



† Does not have a week 53, so the week 53 value is an average of week 52 and week 1.

Figure 13. COVID-19 Weekly Hospitalization Rate per 100,000 Population, Washoe County, 2020-2024 Seasons†



† Does not have a week 53, so the week 53 value is an average of week 52 and week 1.

Figure 14. COVID-19 Weekly Hospitalization Rate per 100,000 Population by Age Group, Washoe County, 2024-2025 Season

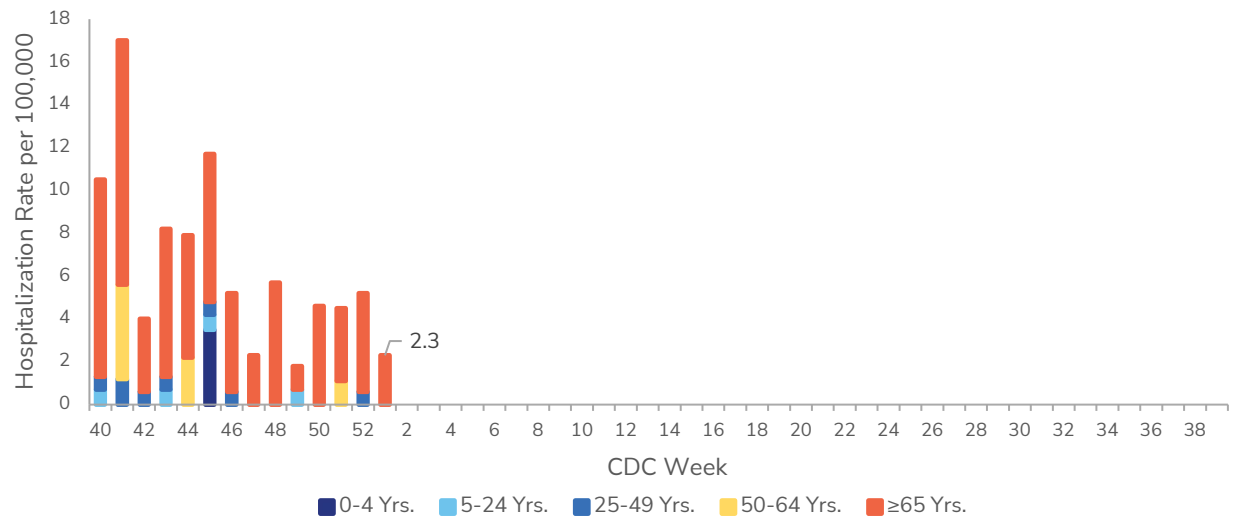


Table 5. Cumulative Number of COVID-19 Deaths by Age Group, Washoe County, 2024-2025 Season

Age Group	Deaths (All)
0-4 Yrs.	0
5-24 Yrs.	0
25-49 Yrs.	0
50-64 Yrs.	0
≥65 Yrs.	10
Total	10

Respiratory Syncytial Virus

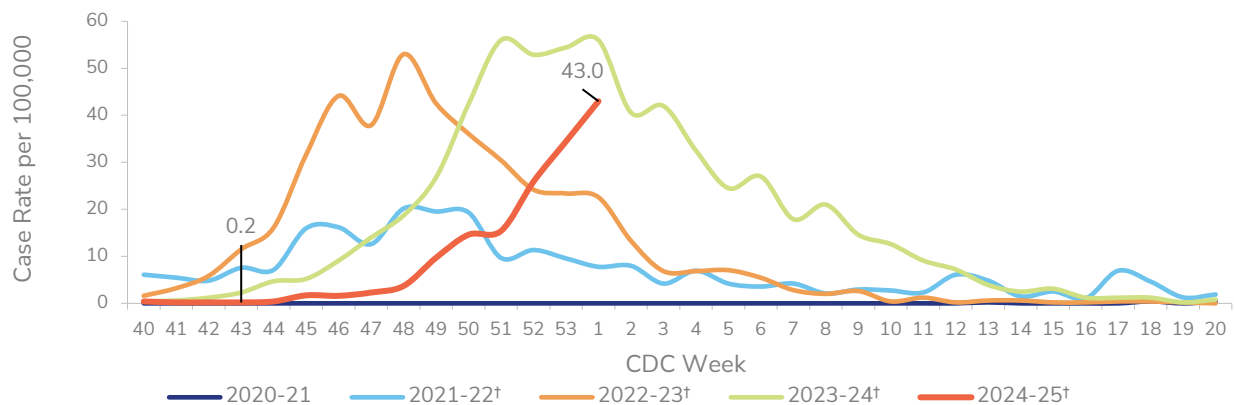
Respiratory Syncytial Virus (RSV) is a common respiratory virus that can present with flu-like signs and symptoms (e.g., fever, coughing, runny nose). RSV, while usually presented with mild symptoms, can be serious, especially for infants and older adults. It is the most common cause of bronchiolitis and pneumonia in children younger than 1 year of age. RSV is a reportable condition in Nevada.

- 221 cases of RSV were reported for the current week (**increase from 133**).
- The rate of RSV was 43.0 cases per 100,000 (**increase from 25.9**).
- The age group with the highest weekly RSV rate per 100,000 population in Washoe County was the 0-4-year age group at 459.7 (**no change in age group, increase from 241.9**).
- The age group with the highest cumulative RSV rate per 100,000 population in Washoe County was the 0-4-year age group at 1182.0 (**no change in age group, increase from 722.3**).

Table 6. Number and Rate per 100,000 of RSV Cases by Current Week and Cumulative for the Season, Washoe County, 2024-2025 Season

Age Group	Current Week (Week 01) December 29, 2024 - January 4, 2025		Cumulative for 2024-2025 Influenza Season September 29, 2024 - January 4, 2025	
	Count	Rate per 100,000	Cumulative Count	Cumulative Rate per 100,000
0-4 Yrs.	133	459.7	342	1182.0
5-24 Yrs.	38	27.6	127	92.1
25-49 Yrs.	21	12.4	52	30.8
50-64 Yrs.	15	16.5	46	50.6
≥65 Yrs.	14	16.0	46	52.6
Total	221	43.0	613	119.2

Figure 15. RSV Case Rate per 100,000 Population by Week Reported, Washoe County, 2020-2024 Seasons†



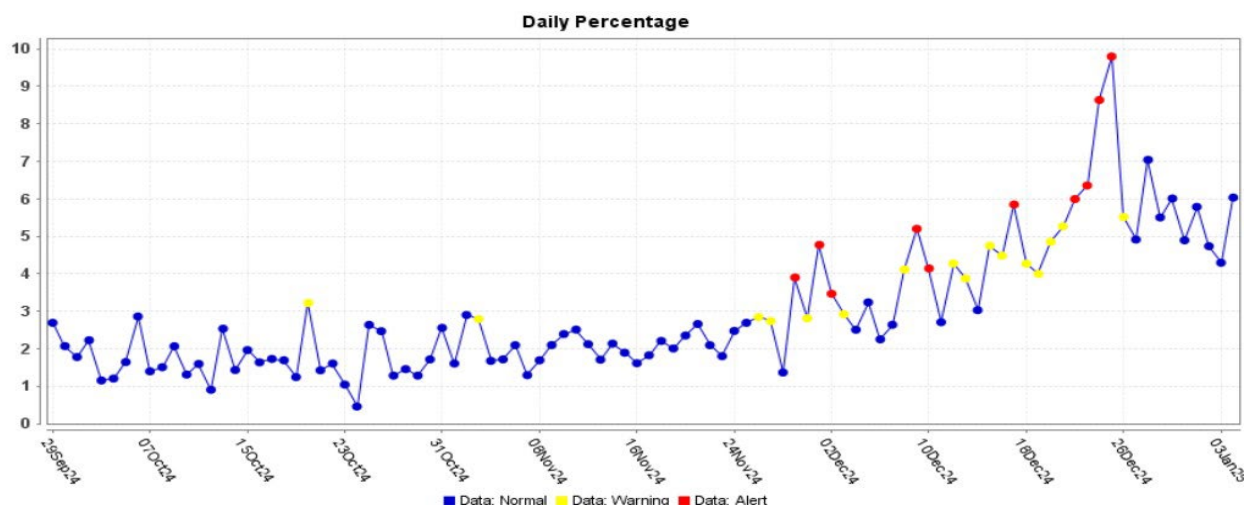
† Does not have a week 53, so the week 53 value is an average of week 52 and week 1.
Only the current week, highest and lowest rate weeks are shown with data labels.

Syndromic Surveillance

Emergency Department (ED) Visits and Urgent Care (UC) Visits

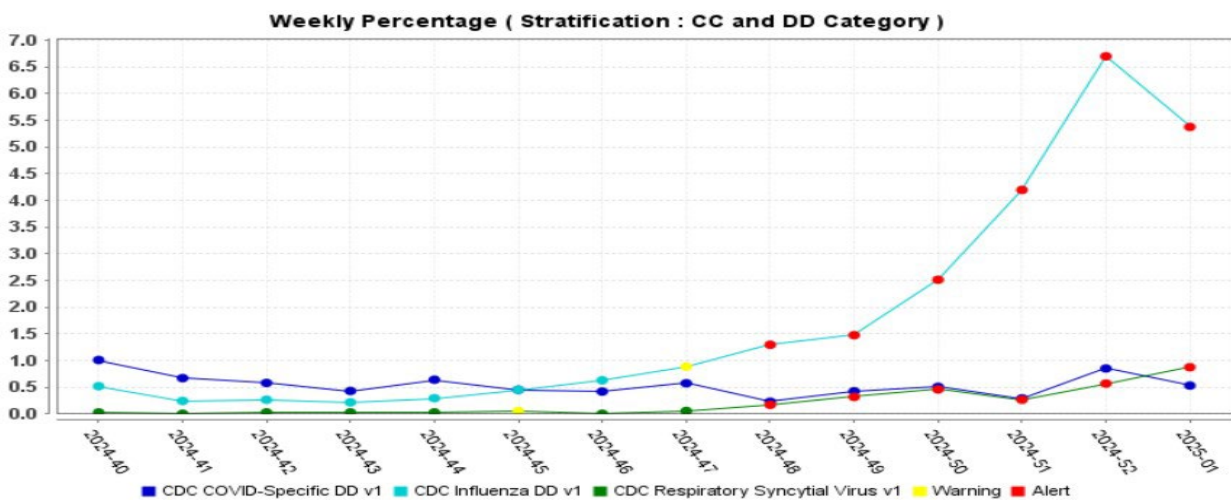
Percentage of patients seen for ILI (i.e., influenza or fever and a cough and/or a sore throat) in EDs and UCs is presented in Figure 16. The overlay depicts ILI syndrome in blue while alerts appear as yellow and/or red dots, indicating an unusually high percentage of ILI visits according to ESSENCE algorithms. Percentage of patients seen for Influenza, COVID-19, and RSV in EDs and UCs is presented in Figure 17. Conditions are defined by discharge diagnosis code (e.g., ICD-10 codes).

Figure 16. Percentage of ED and UC* Visits for ILI for Weeks 40-01, Washoe County, 2024-2025 Season



Data source: ESSENCE (National), *13 Emergency Departments/Urgent Care reporting to ESSENCE.

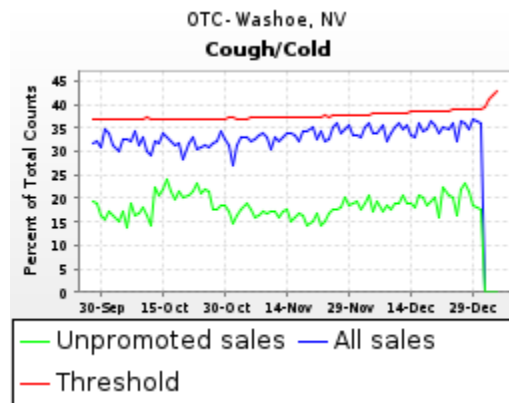
Figure 17. Percentage of ED and UC* Visits for Influenza, COVID-19, and RSV for Weeks 40-01, Washoe County, 2024-2025 Season



Data source: ESSENCE (National), *13 Emergency Departments/Urgent Care reporting to ESSENCE.

Over the Counter (OTC) Sales for Cough and/or Cold Remedies

Figure 18. OTC Sales for Cough and/or Cold Remedies for Weeks 40-01, Washoe County, 2024-2025 Season



Data source: National Retail Data Monitor Data coverage in Washoe County

Surveillance Changes 2024-2025 Season

- Rates per 100,000 for hospitalizations and RSV are now calculated and presented in place of raw numbers. Both are now the rates depicted in the *Weekly Summary & Changes from Previous Week*.
- Weekly rates per 100,000 for all influenza hospitalizations in Washoe County are given along with age group.
- A figure was added to show percentage of ED and UC Visits for Influenza, COVID-19, and RSV using discharge diagnoses reported by syndromic surveillance ESSENCE data.
- Starting with the 2023-2024 influenza season, Nevada implemented the use of ESSENCE data for ILI data reporting to CDC's ILINet. The number of reporters using ESSENCE for ILI reporting for Washoe County went from 11 to 12 (of 14 total reporters).
- Influenza A (H1) is no longer reported in the NSPHL section as not routinely tested for by NSPHL.
- The pneumonia, influenza, and/or COVID-19 (PIC) death percentages are no longer collected and calculated locally and are not compared to CDC's weekly percentages and "epidemic threshold."
- The RSV section has been updated to now include a table showing weekly and cumulative counts and rates by age groups. The RSV figure now depicts comparative rates by season rather than counts and highlights the lowest, highest, and current week's rates of the current season.
- The COVID section has been created to include laboratory-confirmed case data for SARS-CoV-2 based on labs reported to NNPH. This is a reportable condition in Nevada.